

namathela



TYRELOK™

the ORIGINAL aluminium
safety band

- Retain control at all times
- Flat tyre? ... Protect everybody in the vehicle and drive to a place of safety
- Prevent vehicle and rim damage
- Simply to save your life



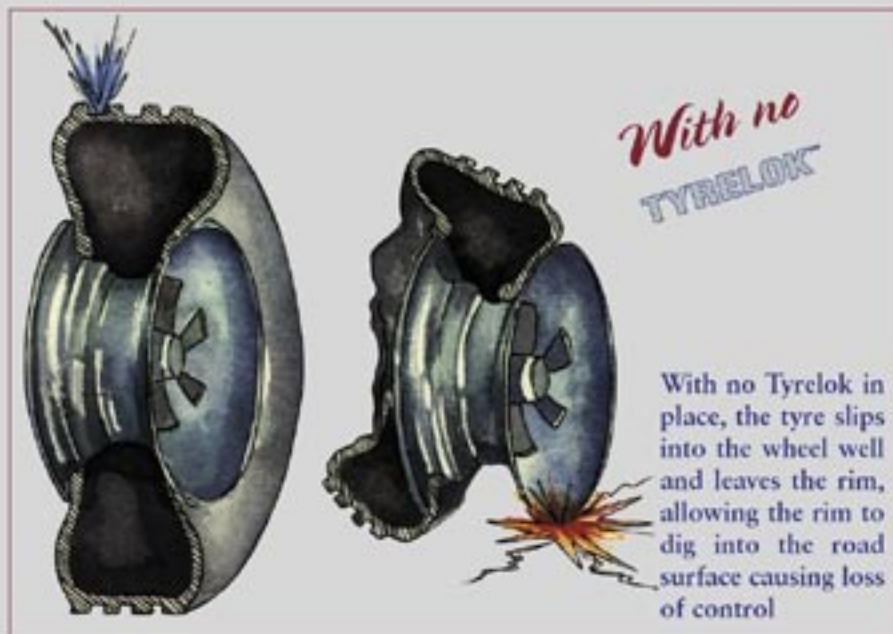
How does namathela TYRELOK™ work?

By protecting the wheels of the vehicle all tyre failure related accidents, many of which are fatal, will be eliminated.

namathela TYRELOK™ will allow you to drive with a flat tyre at a reduced speed for up to 25 kilometres to a place of safety. You need never be stranded at the side of the road.

BMA Marketing Services (Pty) Ltd

T/F: +27 (0) 11 476 9010
André: +27 (0) 82 788 0099
Carol: +27 (0) 82 863 8939
Mike: +27 (0) 82 788 0100
Pyp: +27 (0) 82 565 2718
E-mail: pyp@tyrelok.com
carol@jarion.co.za
www.tyrelok.com

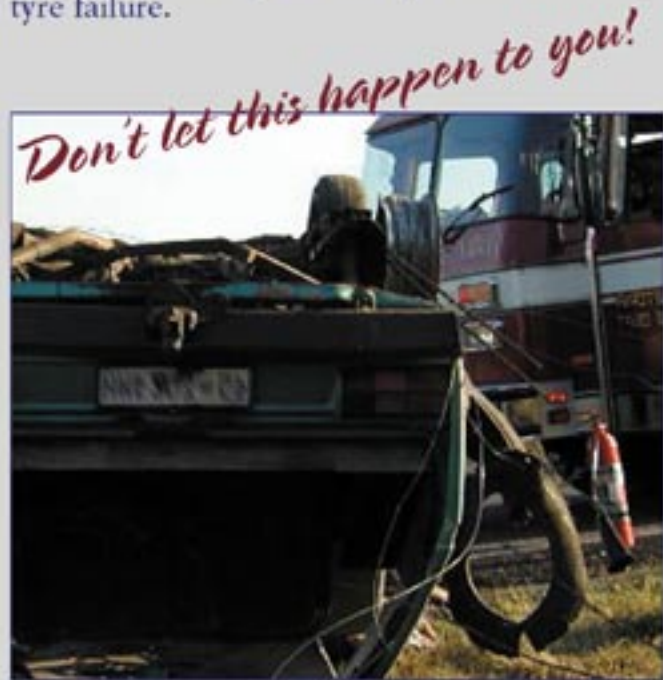


Why protect your wheels?

The **namathela TYRELOK™** Safety System is one of the only pro-active safety devices available. It will prevent an accident from happening in the event of any form of tyre failure. Safety systems such as seatbelts and airbags become effective after the incident.

The **namathela TYRELOK™** Safety System provides a further advantage in that the driver does not need to stop at the side of the road in order to change the flat/damaged tyre, thereby putting themselves and the passengers at risk, but can drive up to 25 kms at a reduced speed, to a place of safety.

Vehicles and tyres can be well maintained but it is not possible to anticipate the pothole, nail, broken bottle or any other foreign object that may cause damage to the tyre and ultimately tyre failure.



namathela TYRELOK™ are a once-off purchase. They are transferable from one vehicle to another provided the rim size is the same. They are rust proof, light and most importantly affordable.

The unique securing clip

namathela TYRELOK™ Safety Systems are the original and world's first aluminium safety band. Designed and developed in conjunction with the Aluminium Federation of Southern Africa, **namathela TYRELOK™** offers:

- A unique and effective securing spring clip, ensuring the band remains under tension on the wheel rim under all conditions.



A view of the unique spring clip

- Facilitates easy fitment of the **TYRELOK™**



- Allows for quick and easy removal of the **TYRELOK™**s.

In the event of any form of tyre failure, **namathela TYRELOK™** will enable you, the driver, to retain complete control of your vehicle.



TYRELOK™ in position on the wheel rim

We manufacture and supply **namathela TYRELOK™** for all tubeless wheel rims: 12" through to 22,5"

namathela

TYRELOK™

Simply to save your life!